

SPACING RECOMMENDATIONS FOR OPTIMAL LIGHT DISTRIBUTION

CORRIDORS / HALLWAYS

Fixture no: LSLDR00B

Power: 2.7 W

Test Date: 7/28/2017

Beam Angle 50%: 117.9°

Field Angle 10%: 165°

CCT (Color Temp): 2977 K

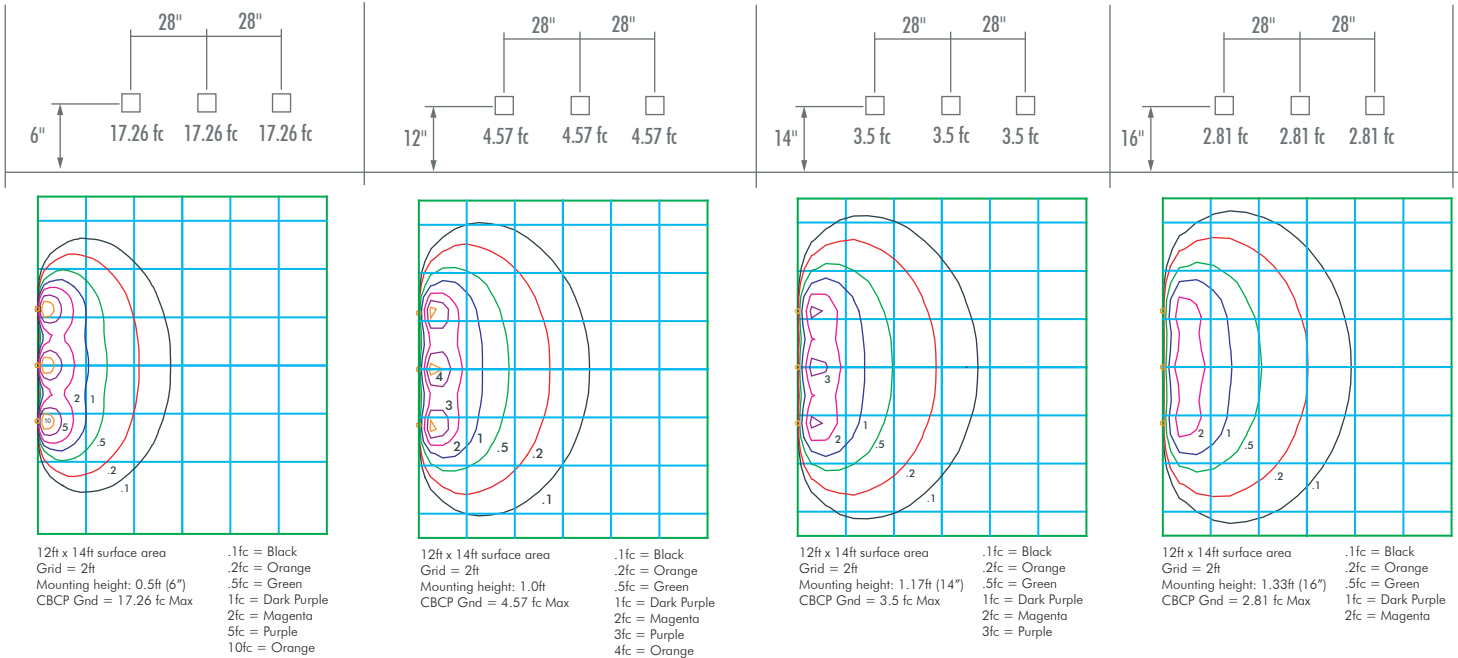
CRI Value: 86.6

R9 Value: 33.7

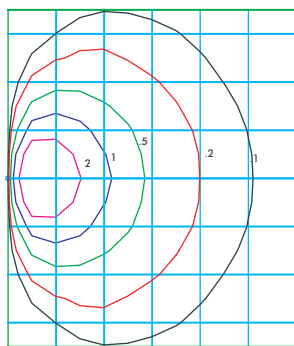
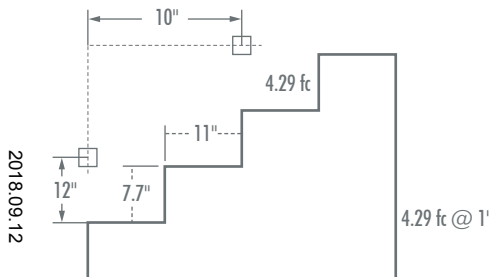
Lm Delivered: 44.5 lm

CBCP: 14.2 cd

Power Factor: 0.92

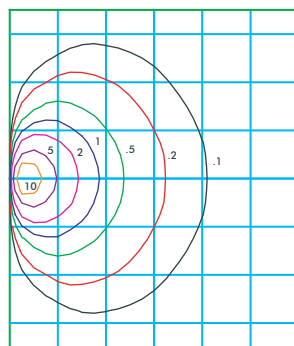
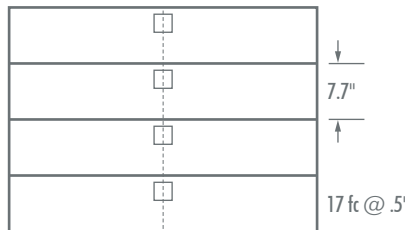


STAIRS - WALL MOUNT



STAIRS - STEP MOUNT

Mount in center of stair as close to the upper tread as possible. For best results use one light per step for steps narrower than 5 feet.



POLAR CURVE

