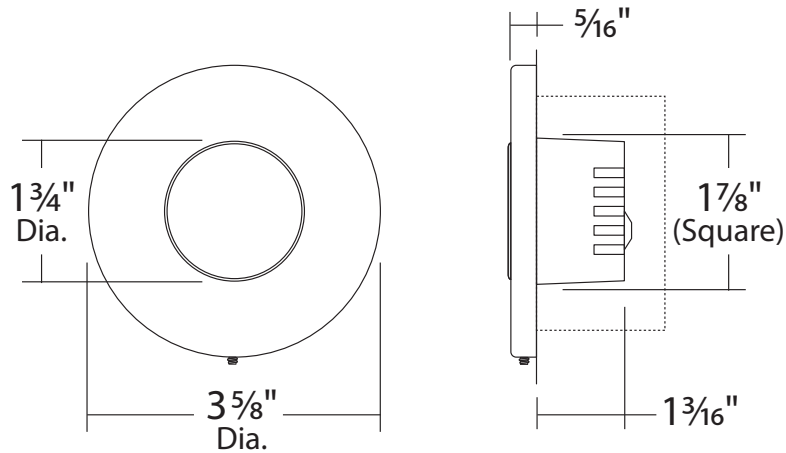


LSLDR00 : ROUND OPEN LENS LED PATHWAY/STEP LIGHTING



- Die Cast Construction
- Sleek screw-less face plate
- Direct wiring, long leads.
- No remote driver required
- Dimmable with ELV Dimmers



ORDERING : LSLDR00B-TAM-12VDC

LSLDR00

Fixture Finish Options Accessory

Finish		Options		Accessory	
Black	B	2850K (120V)	Blank	None	Blank
White	W	590nm Amber LED (120V)	-TAM	Universal Bracket/ (Concret Pour/ Panel Mount)	/LSLDR-BRKT
		590nm Amber LED (12VDC)	-TAM-12VDC	3 1/2" J-Box (By Others)	-JBX

2023.09.19

SPECIFICATION

Application

Low level illumination of pathways, aisles and lower egress in residential and commercial applications. Translucent lens provides a soft, diffused glow that minimizes glare while maximizing lumen output.

Mounting

Optional mounting bracket for cement pour, retrofit and joist mount (LSLDRBRKT).

Dimming

Works with standard electronic low voltage (ELV) dimmers. Factory qualified for use with Lutron brand dimmers: SELV300P, DVELV-300P, MAELV-600 and NELV-450.

Lumen Maintenance

Minimum 50,000 hours L70 life based on ANSI TM-21 calculations from LM80 standardized test results.

Thermal Management

Effective thermal dissipation facilitated by integral cast-aluminum, finned heat sink design for maximum heat rejection to provide long LED life.

Color Temperature

Comes standard with 2850K Warm White LED's binned according to ANSI C78 377A for color temperature and chromaticity ranges.

Warranty

Covered by a 3-year warranty to be free of defects in materials or craftsmanship.

Listing

ETL / cETL Listed. Assembled in USA. (IP65). ADA compliant.

Finish

Seamless and screw-less die-cast aluminum faceplate. Available in Black and White.

Accessory

Available in and Universal Bracket.

LED Details

3.5W 240 + Lumens Delivered
Color Rendering Index (CRI): 80
Color Temperature: 2850K
Lamp Equivalents: 10W Incandescent

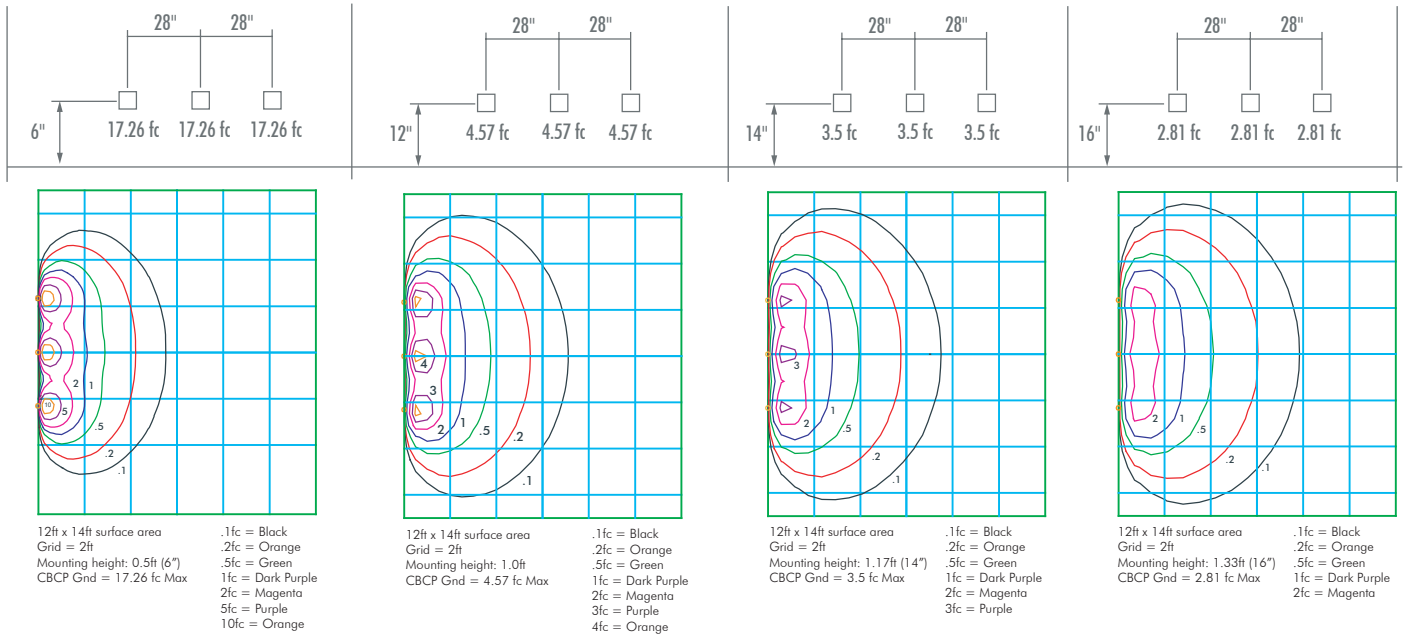
PHOTOMETRY

Fixture no: LSLDR00B
Power: 2.7 W
Test Date: 7/28/2017
Beam Angle 50%: 117.9°
Field Angle 10%: 165°
CCT (Color Temp): 2977 K

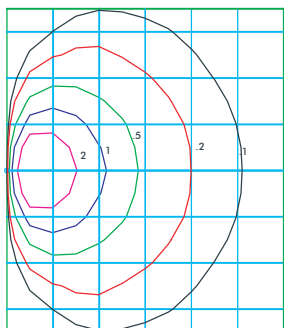
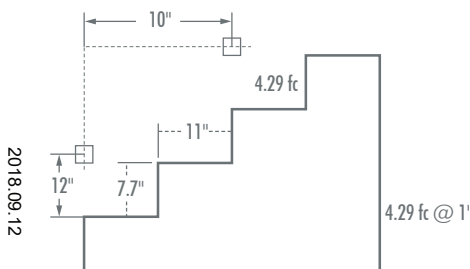
CRI Value: 86.6
R9 Value: 33.7
Lm Delivered: 44.5 lm
CBCP: 14.2 cd
Power Factor: 0.92

SPACING RECOMMENDATIONS FOR OPTIMAL LIGHT DISTRIBUTION

CORRIDORS / HALLWAYS

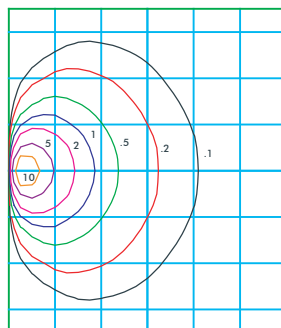
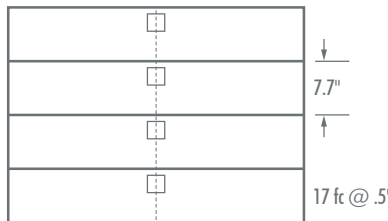


STAIRS - WALL MOUNT

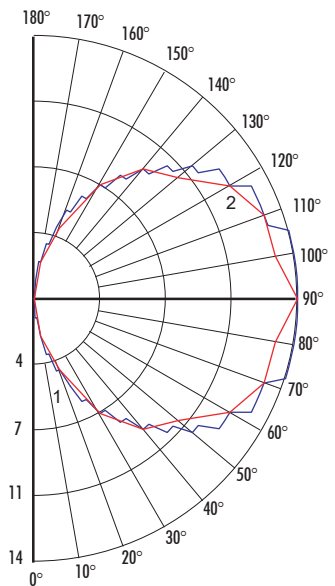


STAIRS - STEP MOUNT

Mount in center of stair as close to the upper tread as possible.
For best results use one light per step for steps narrower than 5 feet.



POLAR CURVE



Maximum Candela = 14 Located At Horizontal Angle = 0, Vertical Angle = 72.5
1 (Blue) - Vertical Plane Through Horizontal Angles (0 - 180) (Through Max. Cd.)
2 (Red) - Horizontal Cone Through Vertical Angle (72.5) (Through Max. Cd.)